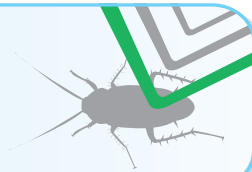


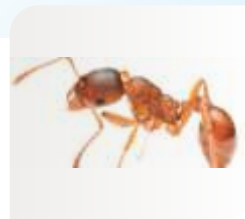


GOLDSEAL[®]
COCKROACH CONTROL



CRACKING THE HOUSEHOLD PEST PROBLEM!

Sharing your home with pesky pests is no fun at all. They can transfer many diseases such as respiratory illnesses and more, all this without you even noticing them! Protect your home and your family with PCI's GoldSeal[®] service.



Protecting Your World[™]



COMMON PEST FACT FILE



COCKROACHES



ANTS



All ant workers, soldiers and queens are females.



Cockroaches will feed on people! They feed at night when people are sleeping, consuming protein materials such as eyebrows and fingernails.

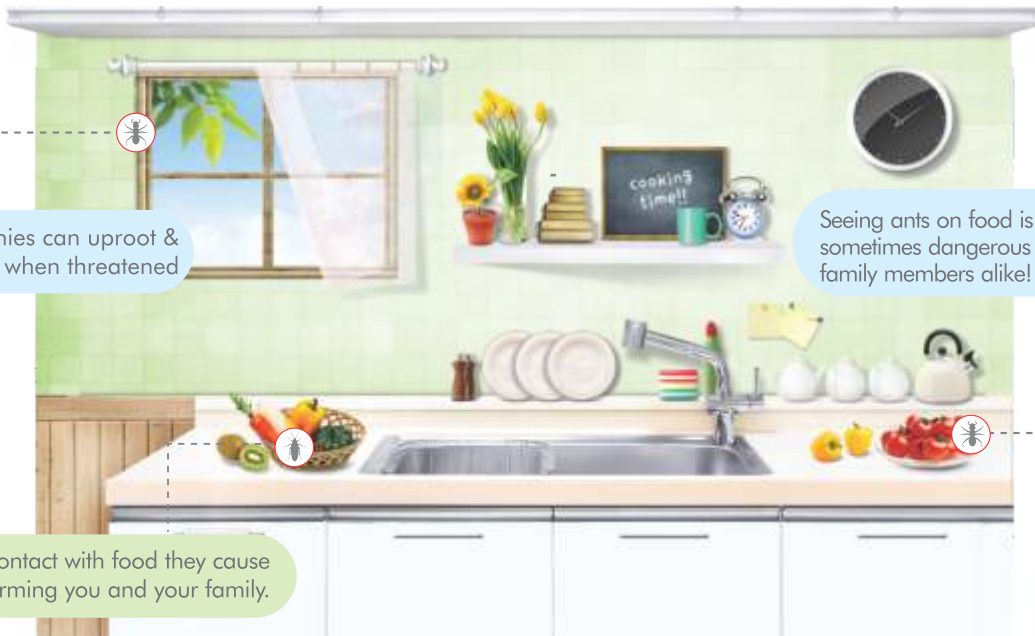
COCKROACHES

Most commonly found species in and around human habitation areas are German Cockroaches, American Cockroaches and Brown-banded Cockroaches. Near-impossible to control without a trained professional, these insects are known to cause Typhoid, Hepatitis, Dysentery, and more. Cockroaches can feed on almost anything including faecal matter.

ANTS

They live in colonies and are close relatives of bees and wasps. The colony size can number up to 300,000 to 500,000 and some species bite, while others can cause structural damage and can also be a nuisance.

DAMAGE DONE BY THESE PESTS



Whole colonies can uproot & relocate quickly when threatened

Seeing ants on food is putting off and sometimes dangerous to guests and family members alike!

Once in contact with food they cause contamination, harming you and your family.

GOLDSEAL® SERVICE:

- ✓ FAST-ACTING GEL TREATMENT
- ✓ NO SMELL, NO FUSS, NO INCONVENIENCE
- ✓ FREE ADDITIONAL COCKROACH TRAPS
- ✓ JOB COMPLETED WHILE YOU WAIT!
- ✓ ANNUAL CONTRACT (1 YEAR WARRANTY)
- ✓ GOVT. APPROVED CHEMICALS
- ✓ ONE-TIME SERVICE ALSO AVAILABLE



Contact PCI today

1800-212-212-5

www.pestcontrolindia.com

SMS: PEST to 54242

THE **#1** PEST
MANAGEMENT COMPANY IN INDIA

220
OFFICES NATIONWIDE

5500
TRAINED PERSONNEL

